

Map referred to in the Tendring (Electoral Changes) Order 2017
Sheet 1 of 1

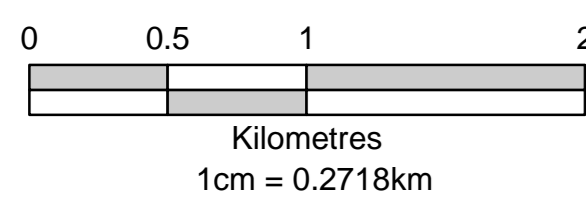
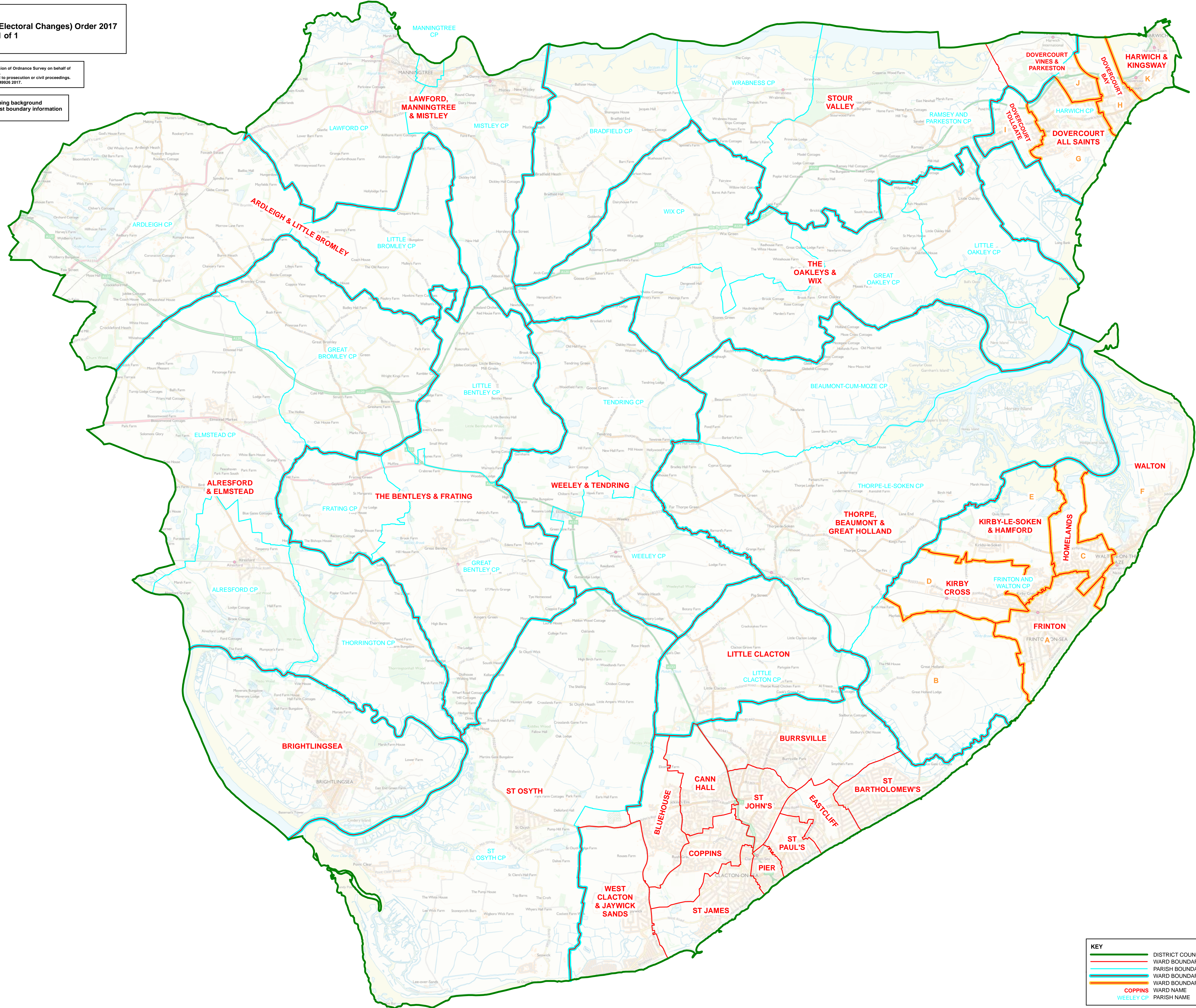
This map is based upon Ordnance Survey material with the permission of Ordnance Survey on behalf of the Controller of Her Majesty's Stationery Office © Crown copyright.
Unauthorized reproduction infringes Crown copyright and may lead to prosecution or civil proceedings.
The Local Government Boundary Commission for England GD1004936 2017.

Boundary alignment and names shown on the mapping background may not be up to date. They may differ from the latest boundary information applied as part of this review.

KEY TO PARISH WARDS

- FRINTON & WALTON CP
- A FRINTON
- B GREAT HOLLAND
- C HOMELANDS
- D KIRBY CROSS
- E KIRBY-LE-SOKEN & HAMFORD
- F WALTON

- HARWICH CP
- G DOVERCOURT ALL SAINTS
- H DOVERCOURT BAY
- I DOVERCOURT TOLLGATE
- J DOVERCOURT VINES
- K HARWICH & KINGSWAY



KEY	
—	DISTRICT COUNCIL BOUNDARY
—	WARD BOUNDARY
—	PARISH BOUNDARY
—	WARD BOUNDARY COINCIDENT WITH PARISH BOUNDARY
—	WARD BOUNDARY COINCIDENT WITH PARISH WARD BOUNDARY
COPPINS	WARD NAME
WEELEY CP	PARISH NAME