

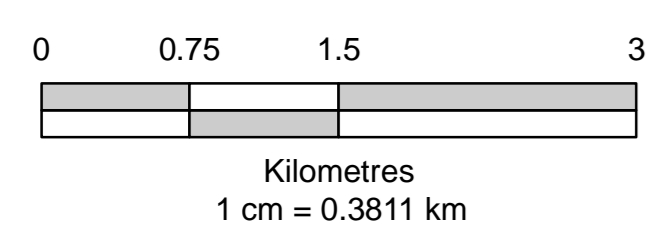
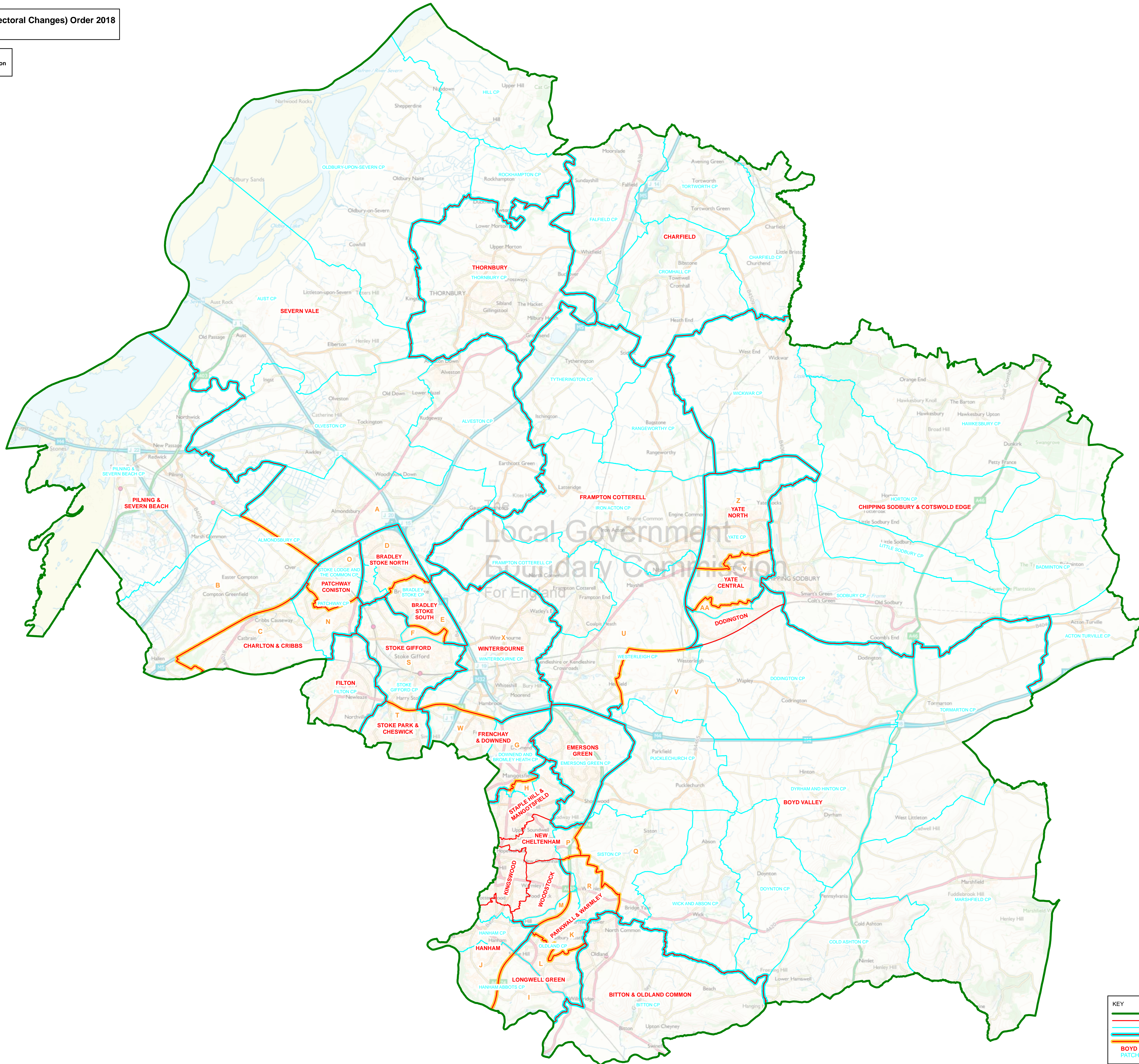
Map referred to in the South Gloucestershire (Electoral Changes) Order 2018
Sheet 1 of 1

Boundary alignment and names shown on the mapping background may not be up to date. They may differ from the latest boundary information applied as part of this review.

This map is based upon Ordnance Survey material with the permission of Ordnance Survey on behalf of the Keeper of Public Records © Crown copyright and database right. Unauthorised reproduction infringes Crown copyright and database right. The Local Government Boundary Commission for England GD10004926 2018.

KEY TO PARISH WARDS

- ALMONDSBURY CP
- A ALMONDSBURY
- B COMPTON
- C CRIBBS CAUSEWAY
- BRADLEY STOKE CP
- D NORTH
- E SOUTH
- F STOKE BROOK
- DOWNEND AND BROMLEY HEATH CP
- G DOWNEND
- H STAPLE HILL
- HANHAM ABBOTS CP
- I EAST
- J WEST
- OLDLAND CP
- K CADBURY HEATH
- L LONGWELL GREEN
- M MOUNT HILL
- PATCHWAY CP
- N CALLICROFT
- O CONISTON
- SISTON CP
- P COMMON
- Q RURAL
- R WARMLEY
- STOKE GIFFORD CP
- S CENTRAL
- T UNIVERSITY
- WESTERLEIGH CP
- U COALPIT HEATH
- V WESTERLEIGH
- WINTERBOURNE CP
- W FRENCHAY
- X WINTERBOURNE
- YATE CP
- Y CENTRAL
- Z NORTH
- AA SOUTH



KEY	
	DISTRICT COUNCIL BOUNDARY
	WARD BOUNDARY
	PARISH BOUNDARY
	WARD BOUNDARY COINCIDENT WITH PARISH BOUNDARY
	WARD BOUNDARY COINCIDENT WITH PARISH WARD BOUNDARY
	WARD NAME
	PARISH NAME