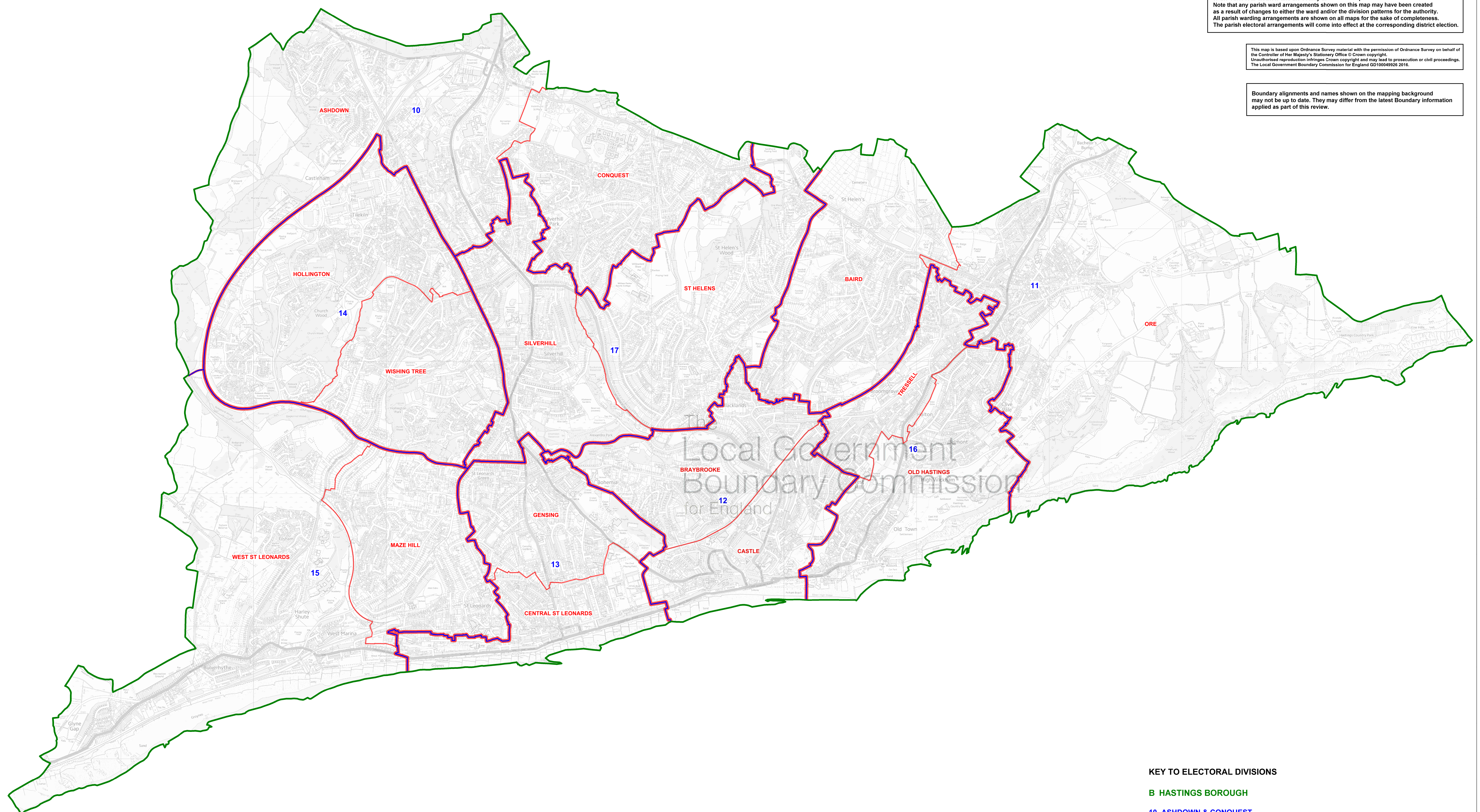


This map shows the wards and divisions for the district created as a direct consequence of the combined electoral review of East Sussex. This map should be viewed in conjunction with the maps, reports and Orders that relate to the other four districts and the county that also took part in this review. Note that any parish ward arrangements shown on this map may have been created as a result of changes to either the ward and/or the division patterns for the authority. All parish warding arrangements are shown on all maps for the sake of completeness. The parish electoral arrangements will come into effect at the corresponding district election.

This map is based upon Ordnance Survey material with the permission of Ordnance Survey on behalf of the Controller of Her Majesty's Stationary Office © Crown copyright. Unauthorised reproduction infringes Crown copyright and may lead to prosecution or civil proceedings. The Local Government Boundary Commission for England GD10049926 2016.

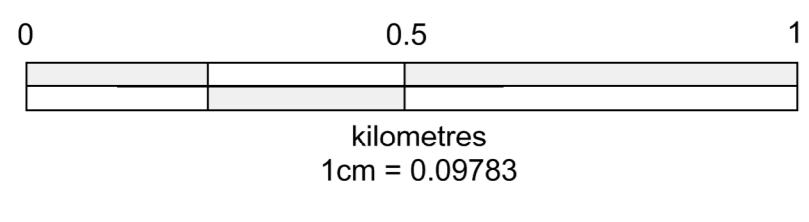
Boundary alignments and names shown on the mapping background may not be up to date. They may differ from the latest Boundary information applied as part of this review.



KEY TO ELECTORAL DIVISIONS

B HASTINGS BOROUGH

- 10 ASHDOWN & CONQUEST
- 11 BAIRD & ORE
- 12 BRAYBROOKE & CASTLE
- 13 CENTRAL ST LEONARDS & GENSING
- 14 HOLLINGTON & WISHING TREE
- 15 MAZE HILL & WEST ST LEONARDS
- 16 OLD HASTINGS & TRESSELL
- 17 ST HELENS & SILVERHILL



KEY	
	BOROUGH COUNCIL BOUNDARY
	WARD BOUNDARY
	ELECTORAL DIVISION BOUNDARY COINCIDENT WITH WARD BOUNDARY
	WARD NAME