

THE LOCAL GOVERNMENT BOUNDARY COMMISSION FOR ENGLAND
ELECTORAL REVIEW OF CORNWALL

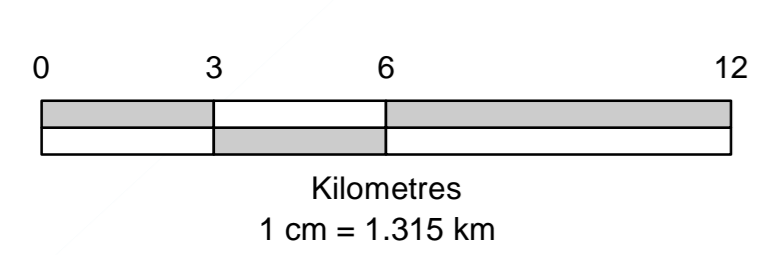
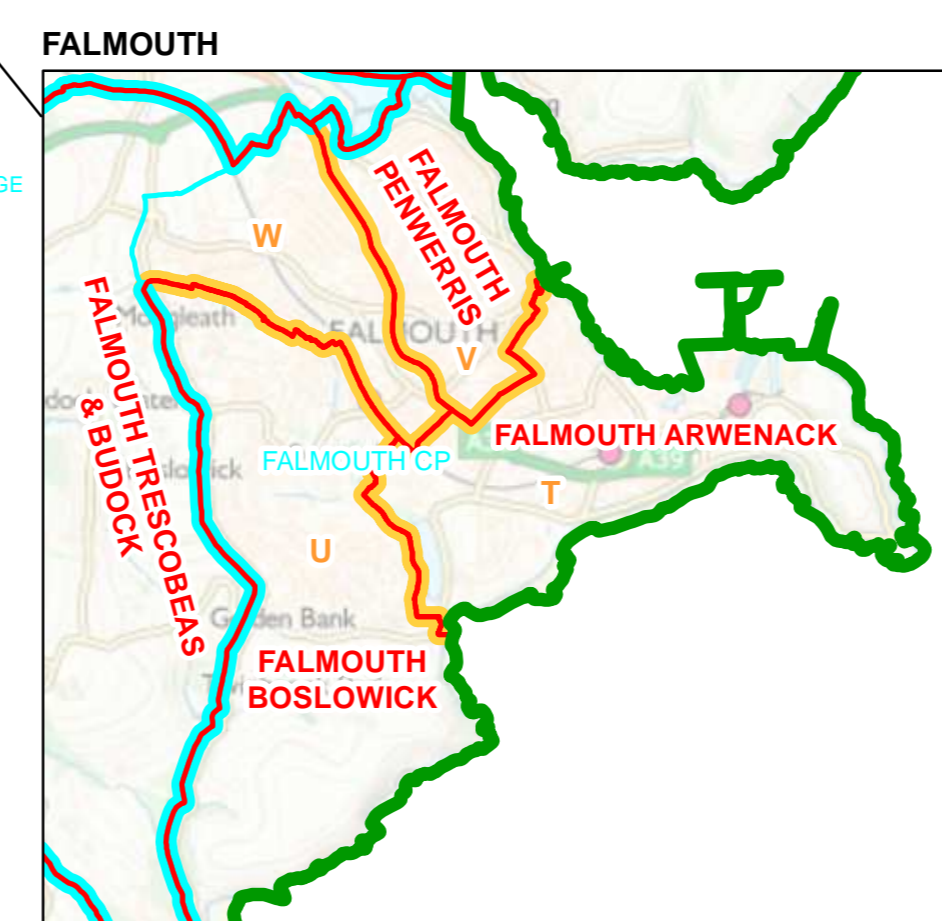
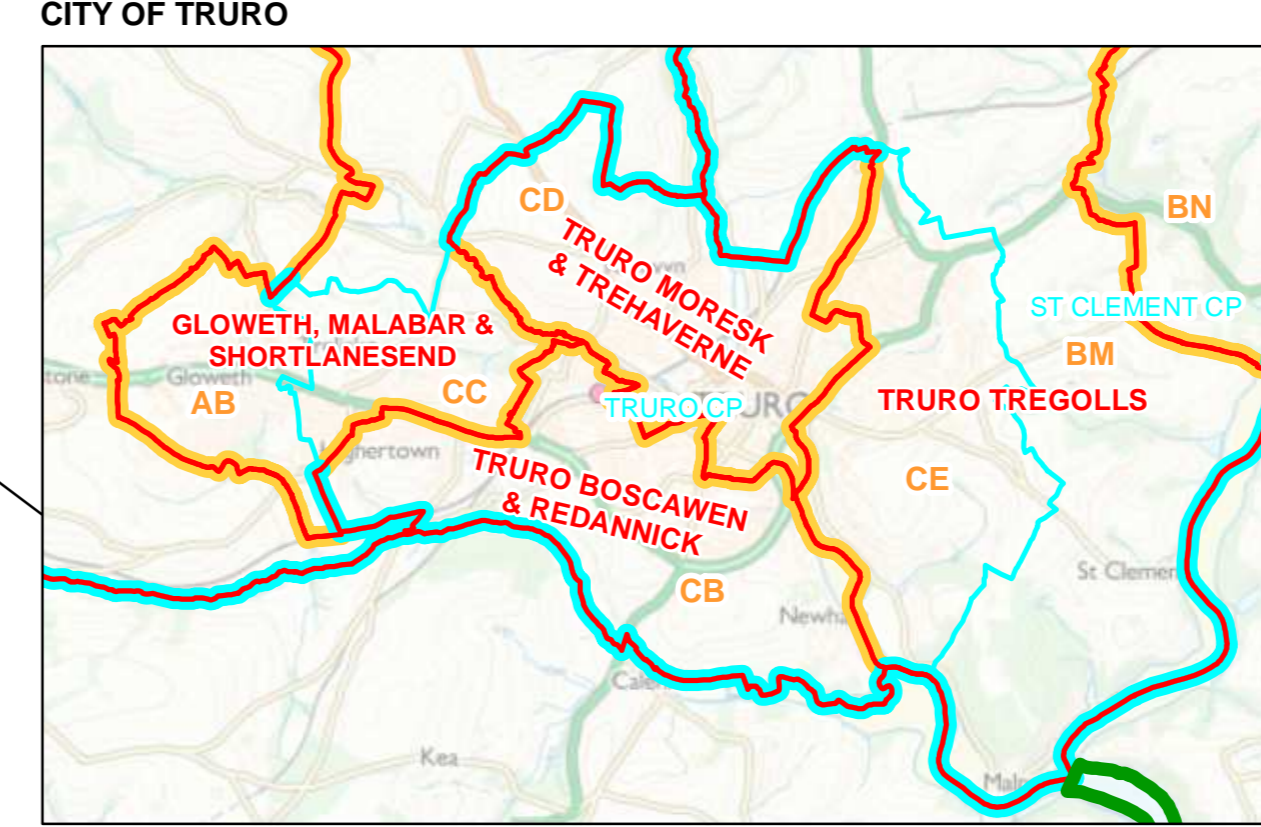
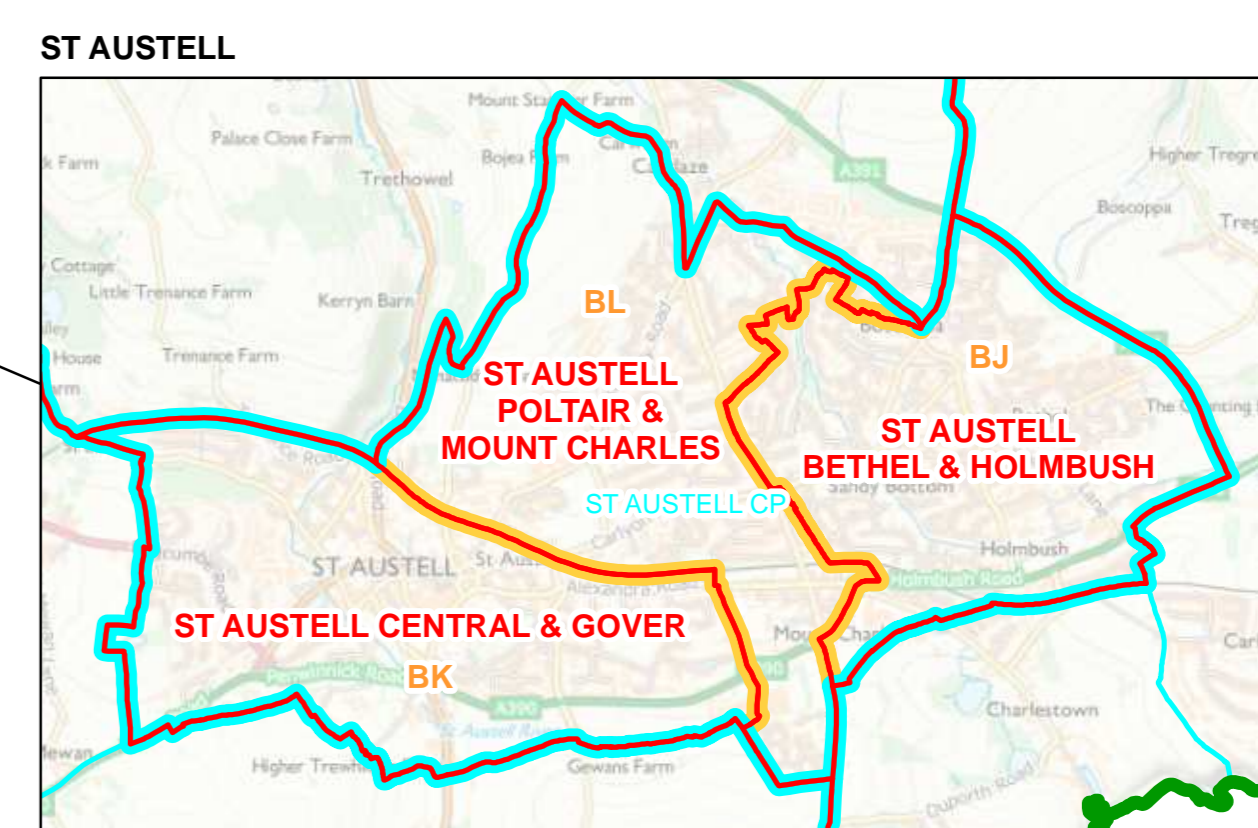
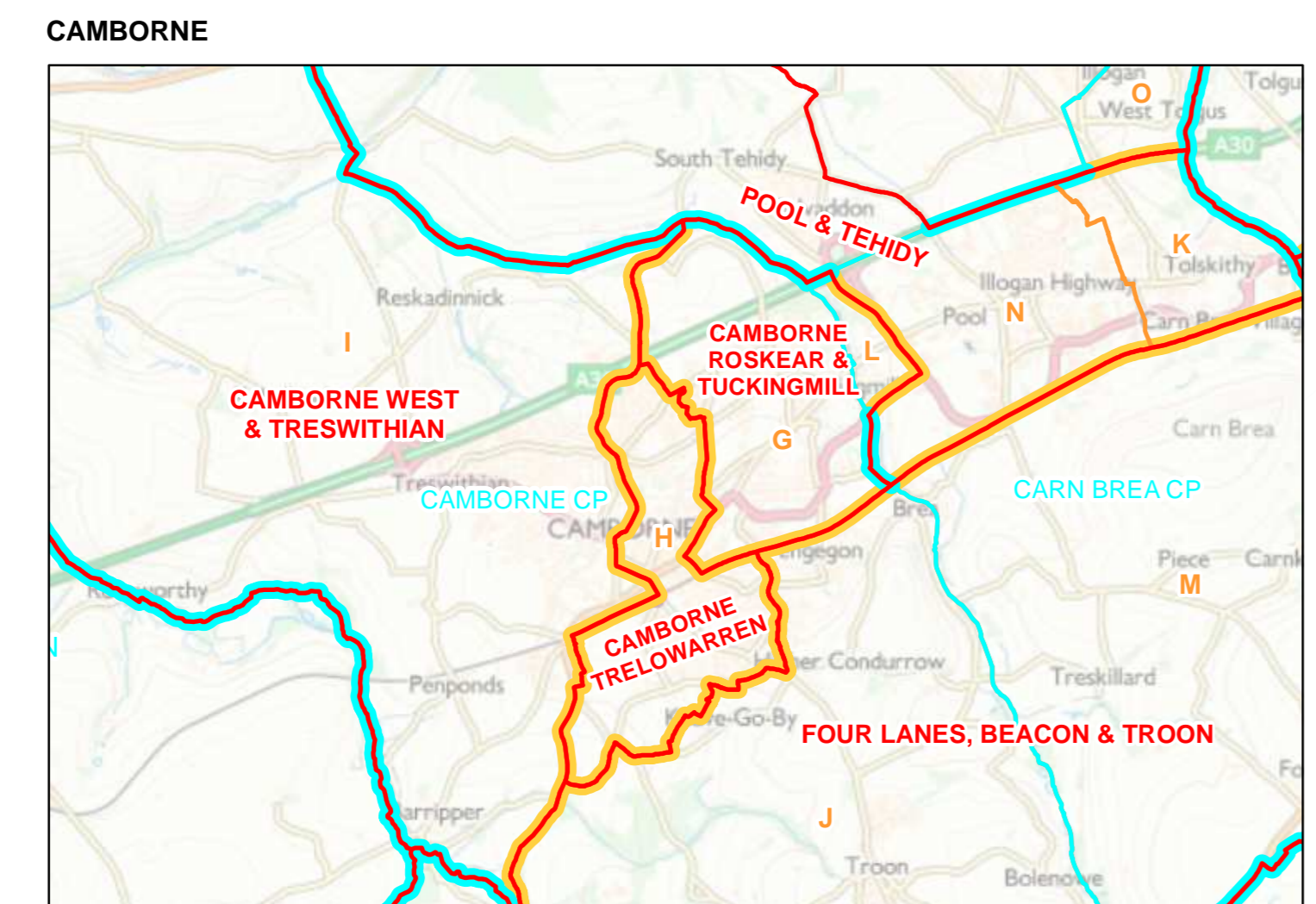
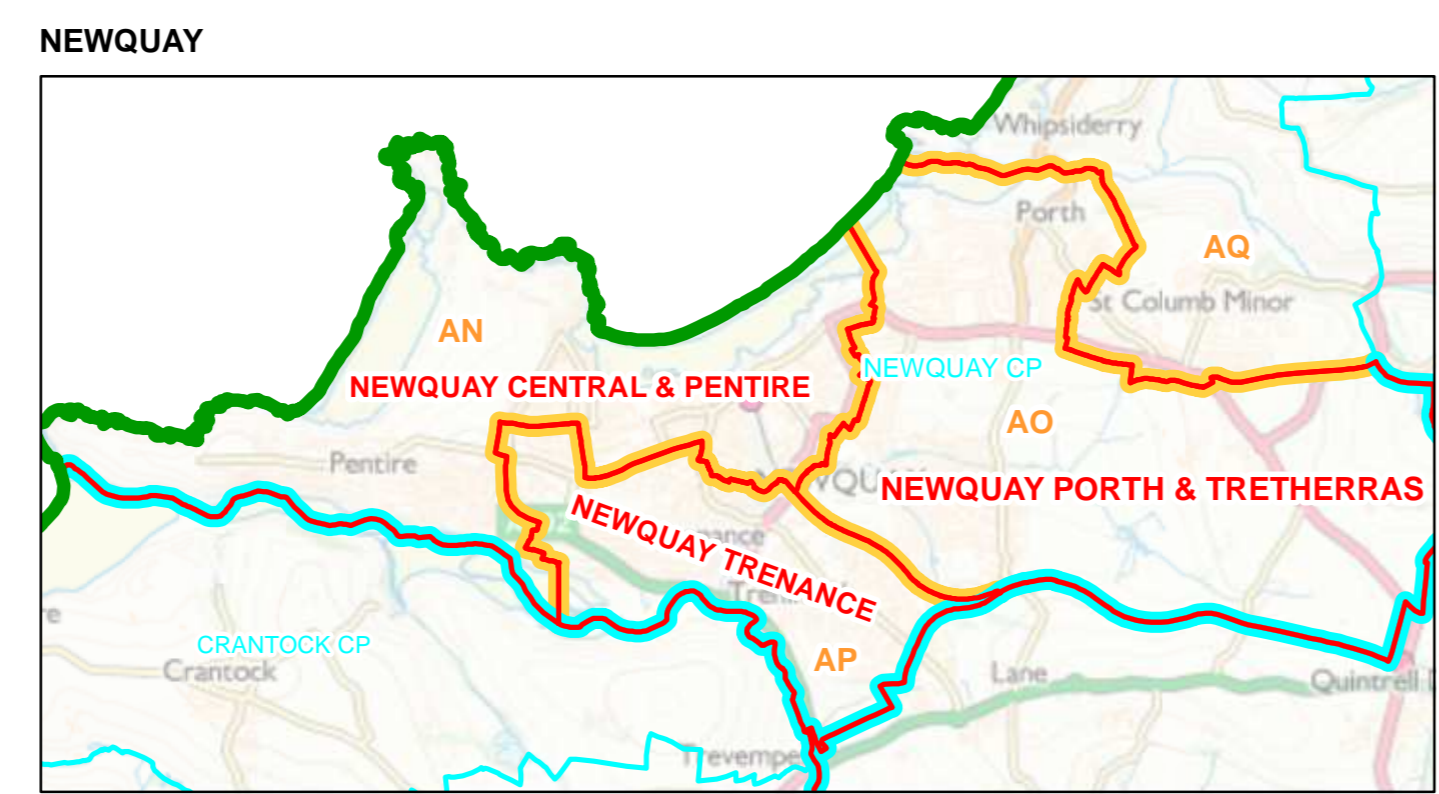
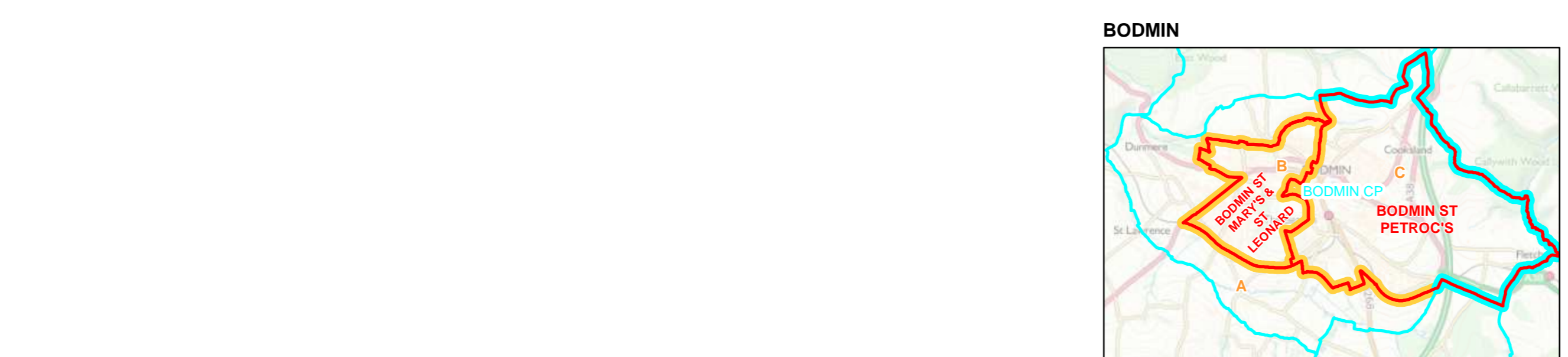
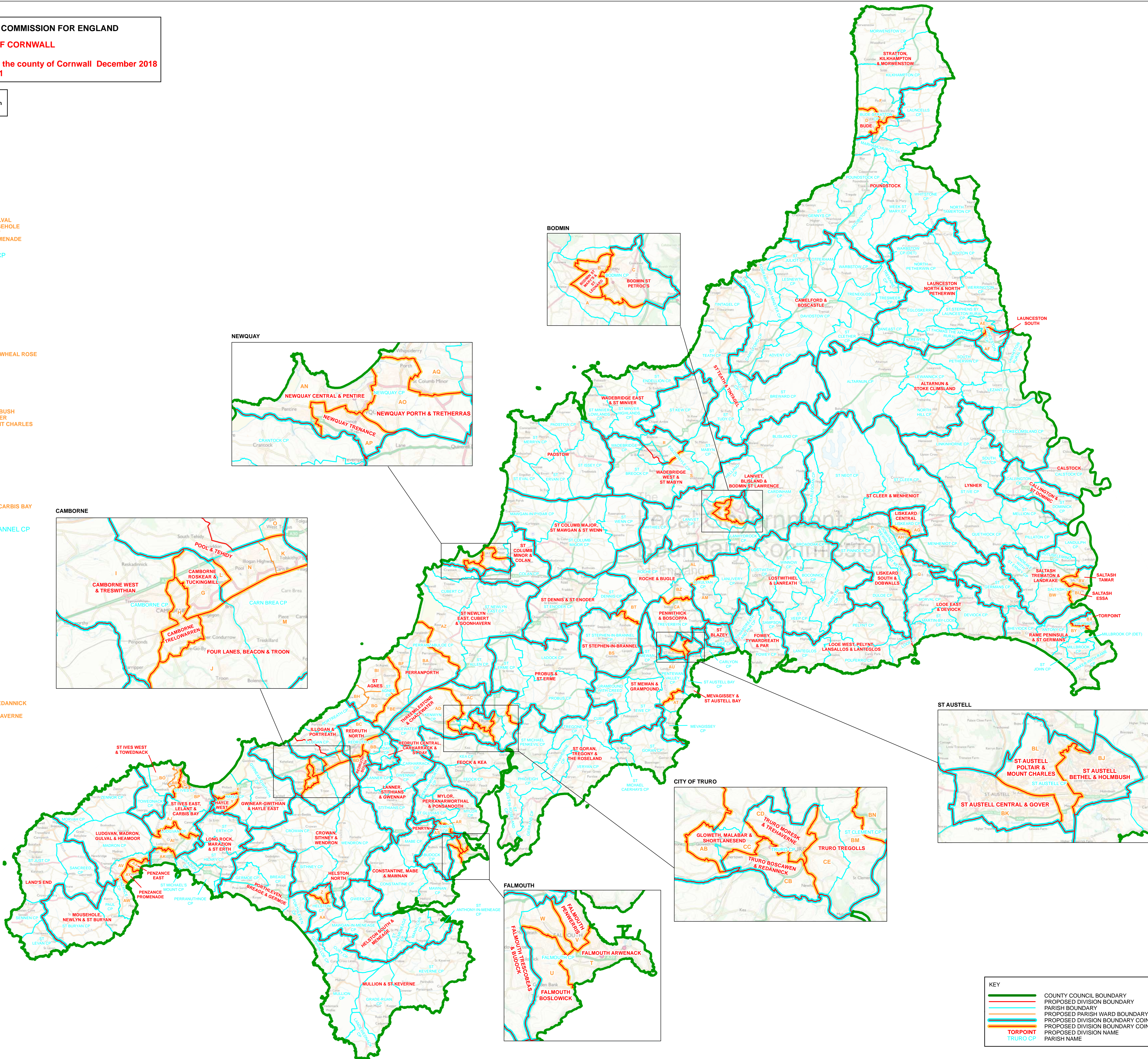
Final recommendations for division boundaries in the county of Cornwall December 2018
Sheet 1 of 1

Boundary alignment and names shown on the mapping background may not be up to date. They may differ from the latest published information applied as part of this review.

This map is based upon Ordnance Survey material with the permission of Ordnance Survey on behalf of the Keeper of Public Records. Crown copyright and database right. Unauthorised reproduction infringes Crown copyright and database right. The Local Government Boundary Commission for England GD10049926 2018.

KEY TO PARISH WARDS

- BODMIN CP**
 - A ST LAWRENCE
 - B ST MARY'S & ST LEONARD
 - C ST PETROC'S
- BUDE-STRATTON CP**
 - D BUDE
 - E HELE
 - F STRATTON
- CAMBORNE CP**
 - G ROSKEAR
 - H TRELAWARREN
 - I TRESWITHIAN
 - J TROON
- CARN BREA CP**
 - K BARNCOOSE
 - L EAST HILL
 - M FOUR LANES
 - N POOL
 - O TOLGUS
- DOBWALLS AND TREWIDLAND CP**
 - P DOBWALLS
 - Q TREWIDLAND
- EGLOSHAYLE CP**
 - R NORTH
 - S SOUTH
- FALMOUTH CP**
 - T ARWENACK
 - U BOSLOWICK
 - V PENWERNIS
 - W TRESCOBEAS
- HAYLE CP**
 - X EAST
 - Y WEST
- HELSTON CP**
 - Z NORTH
 - AA SOUTH
- KENWYN CP**
 - AB GLOWETH
 - AC SHORTLANESEND
 - AD THREEMILESTONE
- LAUNCESTON CP**
 - AE NORTH
 - AF SOUTH
- LISKEARD CP**
 - AG CENTRAL
 - AH SOUTH
- LUDGVAN CP**
 - AI CROWLAS
 - AJ LELANT
 - AK LONG ROCK
- LUXULYAN CP**
 - AL LOCKENGATE
 - AM LUXULYAN
- NEWQUAY CP**
 - AN CENTRAL & PENTIRE
 - AO PORTH & TRETHERRAS
 - AP TRENANCE
 - AQ WHIPSADERRY
- PENRYN CP**
 - AR BISSOM
 - AS PENRYN
- PENTEWAN VALLEY CP**
 - AT PENTEWAN VILLAGE
 - AU TREGORRICK & TREWHIDDLE
- PENZANCE CP**
 - AV HEAMOOR & GULVAL
 - AW NEWLYN & MOUSEHOLE
 - AX PENZANCE EAST
 - AY PENZANCE PROMENADE
- PERRANZABULOE CP**
 - AZ GOONHAVERN
 - BA PERRANPORTH
- REDRUTH CP**
 - BB CENTRAL
 - BC NORTH
 - BD SOUTH
- ST AGNES CP**
 - BE BLACKWATER & WHEAL ROSE
 - BF MITHIAN
 - BG MOUNT HAWKE
 - BH PORTHTOWAN
 - BI ST AGNES
- ST AUSTELL CP**
 - BJ BETHEL & HOLMBUSH
 - BK CENTRAL & GOVER
 - BL POLTAIR & MOUNT CHARLES
- ST CLEMENT CP**
 - BM ST CLEMENT
 - BN TRESILLIAN
- ST IVES CP**
 - BO HALSETOWN
 - BP LELANT
 - BQ ST IVES EAST & CARBIS BAY
 - BR ST IVES WEST
- ST STEPHEN-IN-BRANNEL CP**
 - BS ST STEPHEN
 - BT WITHEMOOR
- SALTASH CP**
 - BU ESSA
 - BV TAMAR
 - BW TREMATON
- TORPOINT CP**
 - BX EAST
 - BY WEST
- TREVERBYN CP**
 - BZ BUGLE
 - CA PENWITTHICK
- TRURO CP**
 - CB BOSCAWEN & REDANNICK
 - CC MALASAR
 - CD MORESK & TREHAVERNE
 - CE TREGOLLS



KEY	
	COUNTY COUNCIL BOUNDARY
	PROPOSED DIVISION BOUNDARY
	PARISH BOUNDARY
	PROPOSED PARISH WARD BOUNDARY
	PROPOSED DIVISION BOUNDARY COINCIDENT WITH PARISH BOUNDARY
	PROPOSED DIVISION BOUNDARY COINCIDENT WITH PROPOSED PARISH WARD BOUNDARY
	TORPOINT
	TRURO CP
	PARISH NAME