

News Release from the Local Government Boundary Commission for England

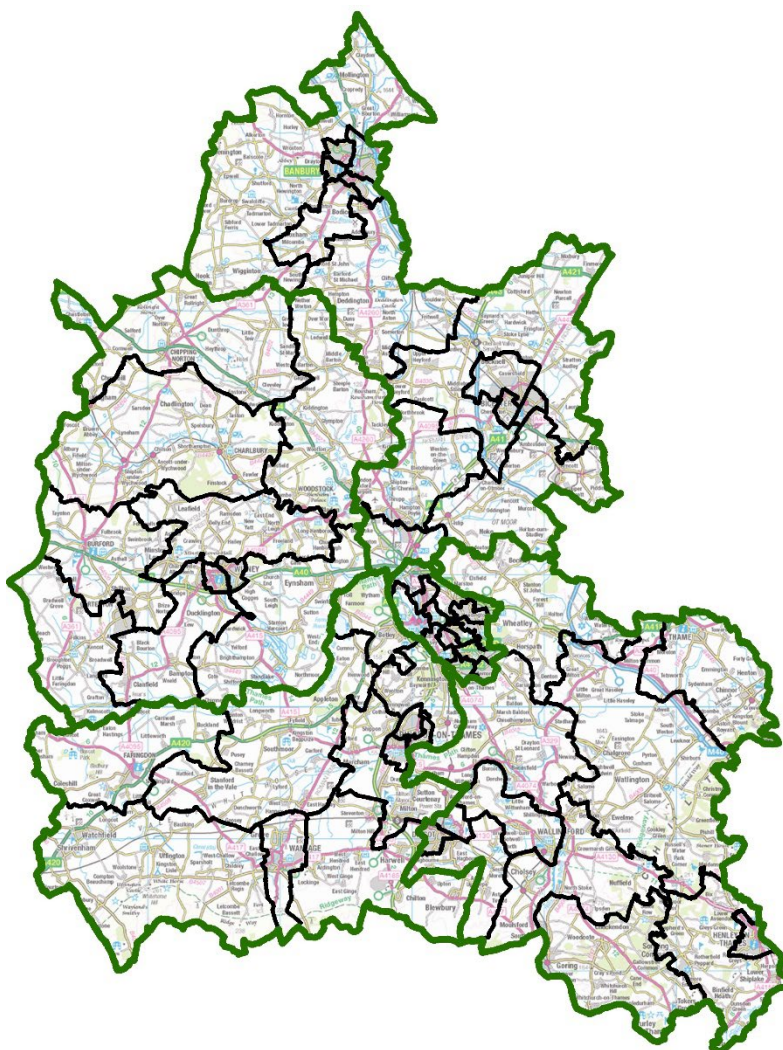
Embargoed until: 00:01 28 February 2023

Have your say on a new political map for Oxfordshire County Council

A new pattern of divisions is being developed for Oxfordshire County Council.

The Local Government Boundary Commission has decided that the number of councillors in Oxfordshire should be 69. This is a change from the current council which has 63.

The Commission wants to hear what residents and organisations think about their local area. A ten week consultation on the proposals will run until 8 May 2023.



Current divisions in Oxfordshire

Credit: contains Ordnance Survey data (c) Crown copyright and database rights 2023

High resolution map available at www.lgbce.org.uk/all-reviews/south-east/oxfordshire/oxfordshire-county-council

The Commission is the independent body that draws these boundaries. It is reviewing Oxfordshire to make sure councillors represent about the same number of electors, and that division arrangements help the council work effectively. It wants to be sure that its proposals reflect community ties and identities.

The Commission is interested in views on which communities should be part of the same division. What facilities do people share, such as parks, leisure centres or schools and shopping areas? What issues do neighbouring communities face that they have in common, such as high numbers of visitors or heavy traffic? Have there been new housing or commercial developments that have changed the focus of communities? And are there roads, rivers, railways or other features that people believe form strong boundaries between neighbourhoods?

The Commission will use local views to help it draw up proposals for new division boundaries. There will be a further round of consultation once the Commission has drawn up those proposals.

Launching the consultation Professor Colin Mellors, Chair of the Commission, said:

“We want people in Oxfordshire to help us.

“We are starting to draw up new divisions for Oxfordshire. We want our proposals for new electoral arrangements to reflect communities. We also want them to be easy to understand and convenient for local people.

“Residents and local organisations can help us understand community ties and identities at this early stage of the process.

“It’s easy to get involved. Go to our website. Or you can e-mail or write to us.

“Just tell us what you think and give us some details why you think that. It’s really simple, so do get involved.”

The Commission has a dedicated section on its website where people can give their views: <https://consultation.lgbce.org.uk/node/686>

People can also give their views by e-mail at reviews@lgbce.org.uk, and by post:

Review Officer (Oxfordshire), LGBCE
PO Box 133
Blyth
NE24 9FE

Ends/

Notes to editors:

This consultation relates to arrangements for local government elections. It is separate from the review of parliamentary constituencies that is currently taking place.

For further information contact the Commission’s press office on 0330 500 1525 / 1250 or email press@lgbce.org.uk

An interactive map is available at The Commission has a dedicated section on its website where people can give their views: <https://consultation.lgbce.org.uk/node/686>

The Local Government Boundary Commission for England is an independent body accountable to Parliament. It recommends fair electoral and boundary arrangements for local authorities in England. In doing so, it aims to

- Make sure that, within an authority, each councillor represents a similar number of electors
- Create boundaries that are appropriate, and reflect community ties and identities
- Deliver reviews informed by local needs, views and circumstances